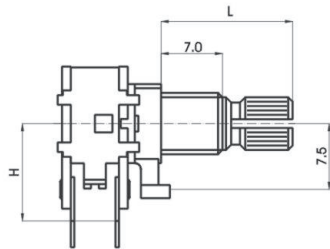
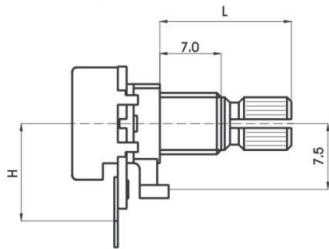
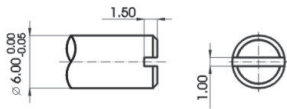


Type of shaft : 軸的型式

R1210N
R1210G

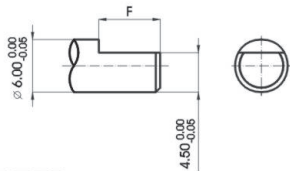


Z	1	2	3
H	10	12.5	14.5



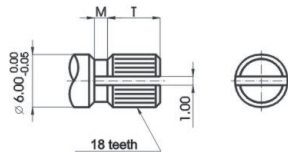
S TYPE:

X	Q	R	S			
L	15	20	25			



F TYPE:

X	A	B	C	D		
L	15	20	25	30		
F	7	12	12	14		



KQ TYPE:

X	2	3	4	5		
L	15	20	25	30		
T	6	8	12	12		
M	1	2	2	2		

Mechanical characteristics: 機械的性能

Total rotational angle 全迴轉角度	300°±10°
Rotational torque 迴轉扭力	2~20mN.m (20~204gf.cm)
Rotation stopper strength 止迴轉強度	0.5 N.m (5kgf.cm)
Push pull strength 軸推拉強度	70N (7kgf) max.
Click torque C.C. 扭力	5~30mN.m (51~305gf.cm)

Electrical characteristics: 電氣的性能

Total resistance 總阻值	B:5KΩ~1MΩ other than B:5KΩ~500KΩ (B以外)
Total resistance tolerance 總阻值容許差	±20% more than 1MΩ ±30%
Rated power 定格電力	B:0.08W other than B:0.04W (B以外)
Max. operating voltage 最高使用電壓	B:150V AC other than B:100V AC (B以外)
Resistance taper 阻值線性	A,B,C
Residual resistance 殘留阻值	R≥250KΩ 0.1% max. of total resistance 250KΩ >R>10KΩ 20Ω max. 10KΩ≥R 10Ω max.
Insulation resistance 絕緣抵抗	more than 50MΩ at DC 500V
Gang error 相互偏差	-40~0 dB≤3dB

Durability: 耐久的性能

Rotational life 迴轉壽命	15,000 cycles
-------------------------	---------------